

**Model and Description**

LAD16	<input type="checkbox"/>	<input type="checkbox"/>	<input type="checkbox"/>	<input type="checkbox"/>	<input type="checkbox"/>
Model	Cylindrical body size: 16: 16mm  22: 22mm 30: 30mm	C: Solder terminal D: Screw terminal  SS: Bi-colour lamp FM: Buzzer SM: Flash buzzer S: Flash lamp  B: Flat internal thread lampshade C: Round lampshade D: Flat external thread lampshade E: 8 equal divided lampshade F: Square lampshade H: Truncated cone lampshade  SS: Bi-colour lamp FM: Buzzer SM: Flash buzzer S: Flash lamp	S: Short type None: Standard       B: Flat internal thread lampshade D: Flat external thread lampshade	Colour:  R-Red G-Green Y-Yellow B-Blue W-White K-Black	Operating voltage:  21-AC.DC 6V 22-AC.DC 12V 23-AC.DC 24V 24-AC.DC 36V 25-AC.DC 48V 26-AC.DC 110V 27-AC.DC 127V 28-AC.DC 220V 31-AC 220V 32-AC 380V

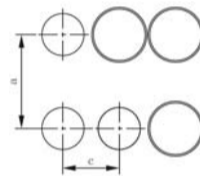
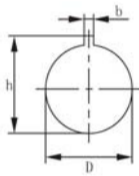
**Application**

LAD16 series LED indicator lamp is widely used in the electrical equipment, telecommunication equipment, machine tools, ship equipment, textile machinery, printing equipment, mining equipment etc. works as indicator signal, warning signal, fault signal, etc.

Approved standards: GB14048.5 IEC60947-5-1.

**Specification**

Power frequency withstand voltage	2.5KV(AC virtual value), 1min
Insulation resistance	≥2m Ω
Allowed voltage fluctuation	±20%(AC indicator lamp)
Continuous working life	≥30000 hours
Luminance	≥100cd/m <sup>2</sup>
Comparative Tracking Index	CTI≥100
Degree of protection	IP65 or IP67
Rated frequency	50~60Hz
Ambient temperature	-20℃~+55℃
Ambient humidity	≤98%RH
Class of pollution	Class 3
Class of installation	Class III

**Mounting**


Cylindrical body Diameter(mm)	Mounting hole Diameter(mm)	Notch size		Between centers of the mounting holes	
		Height(mm)	Width(mm)	Minimum distance(mm)	
d	D	h	b	a	c
22	22.3 <sup>+0.4</sup>	24.1 <sup>+0.4</sup>	3.2 <sup>+0.4</sup>	30	50
16	16.2 <sup>+0.2</sup>	17.9 <sup>+0.2</sup>	1.7 <sup>+0.2</sup>	25	25

**Dimensions**

<b>LAD16-16C</b> 	<b>LAD16-16CS</b> 	<b>LAD16-16D</b> 	<b>LAD16-16DS</b> 	
<b>LAD16-22B</b> 	<b>LAD16-22BS</b> 	<b>LAD16-22C</b> 	<b>LAD16-22CS</b> 	
<b>LAD16-22D</b> 	<b>LAD16-22DS</b> 	<b>LAD16-22E</b> 	<b>LAD16-22ES</b> 	
<b>LAD16-22H</b> 	<b>LAD16-22HS</b> 	<b>LAD16-22SM</b> 		
<b>LAD16-16SS</b> 	<b>LAD16-22SS</b> 	<b>LAD16-22F</b> 	<b>LAD16-30D</b> 	<b>LAD16-77*31</b> 