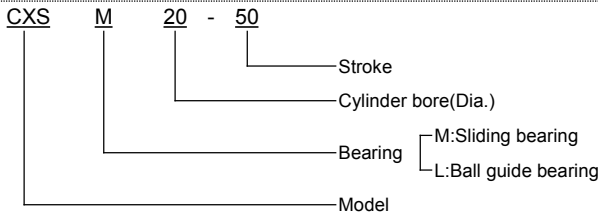


Model and Description



Cylinder could be fixed by screw in 4 directions, the air supply port position is alternative.

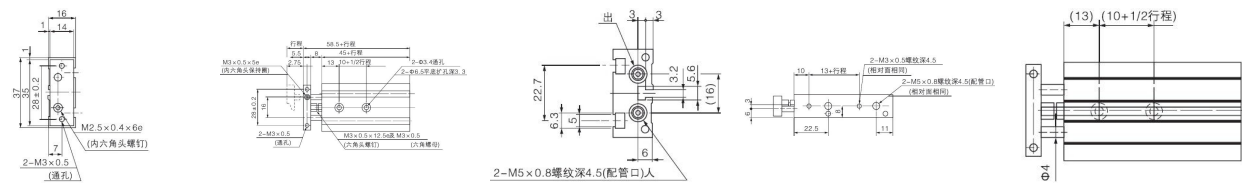


Specification

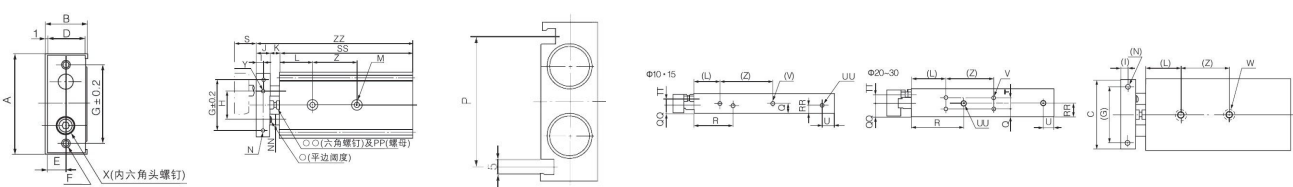
Bore Dia.(mm)	6	10	15	20	25	32	
Working medium	Air						
Action	Double action						
Proof pressure	1.05Mpa(10.7kgf/cm ²)						
Working pressure	0.7Mpa(7.1kgf/cm ²)						
Min working pressure	0.15Mpa(1.5kgf/cm ²)		0.1Mpa(1.0kgf/cm ²)		0.05Mpa(0.51kgf/cm ²)		
Working temperature	0~60℃						
Buffer	Both ends with rubber buffer						
Structure	Double cylinders (twice strength)						
※Lubrication	N/A						
Stroke adjustable range	0~5mm						
Bearing	Sliding bearing/ Ball guide bearing						
Piston rod non-rotating precision	Sliding bearing	±0.1	±0.15	±0.13	±0.11	±0.1	±0.08
	Ball guide bearing	±0.1	±0.1	±0.07	±0.06	±0.05	±0.04
Port size Rc(PT)	M5×0.8				1/8		
※If needed, use No.1 ISOVG32.lubrication							

Dimensions(mm)

CXS□6



CXS□10 / 15 / 20 / 25 / 32



Measurement chart

Model	Stroke	10+1/2 stroke	13+stroke	45+stroke	58.5+stroke
CXS□6-10	10	15	23	55	68.5
CXS□6-20	20	20	33	65	78.5
CXS□6-30	30	25	43	75	88.5
CXS□6-40	40	30	53	85	98.5
CXS□6-50	50	35	63	95	108.5

Model	Stroke(mm)														
	10	15	20	25	30	35	40	45	50	60	70	75	80	90	100
CXS□6	0.081	-	0.095	-	0.108	-	0.122	-	0.135	-	-	-	-	-	-
CXSM10	0.15	0.16	0.17	0.18	0.19	0.20	0.21	0.22	0.23	0.25	0.27	0.28	-	-	-
CXSL10	0.16	0.165	0.17	0.18	0.19	0.20	0.21	0.22	0.23	0.25	0.27	0.28	-	-	-
CXSM15	0.25	0.265	0.28	0.29	0.30	0.315	0.33	0.345	0.36	0.39	0.42	0.435	0.45	0.48	0.51
CXSL15	0.27	0.285	0.30	0.31	0.32	0.335	0.35	0.365	0.38	0.41	0.44	0.455	0.47	0.50	0.53
CXSM20	0.40	0.42	0.44	0.46	0.48	0.495	0.51	0.53	0.55	0.585	0.62	0.64	0.66	0.70	0.74
CXSL20	0.43	0.445	0.46	0.48	0.50	0.515	0.53	0.55	0.57	0.605	0.64	0.66	0.68	0.715	0.75
CXSM25	0.61	0.635	0.66	0.69	0.72	0.745	0.77	0.80	0.83	0.89	0.95	0.97	0.995	1.06	1.10
CXSL25	0.62	0.645	0.67	0.70	0.73	0.755	0.78	0.81	0.84	0.895	0.955	0.98	1.005	1.065	1.11
CXSM32	1.15	1.19	1.23	1.275	1.32	1.36	1.40	1.45	1.49	1.58	1.665	1.71	1.755	1.84	1.93
CXSL32	1.16	1.205	1.25	1.295	1.34	1.38	1.42	1.465	1.51	1.595	1.68	1.72	1.765	1.855	1.94

	CXS□10-					CXS□15-					CXS□20-					CXS□25-					CXS□32-														
	10	20	30	40	50	10	20	30	40	50	10	20	30	40	50	75	100	10	20	30	40	50	75	100	10	20	30	40	50	75	100				
A	46					58					64										80										98				
B	17					20					25										30										38				
C	44					56					62										78										96				
D	15					18					23										28										36				
E	7.5					9					11.5										14										18				
F	2-M4×0.7(through hole)					2-M5×0.8(through hole)					2-M5×0.8(through hole)					2-M6×1.0(through hole)					2-M6×1.0(through hole)														
G	35					45					50										60										75				
H	20					25					28										35										44				
I	4					5					6										6										8				
J	8					10					12										12										14				
K	9					9					12										12										14				
L	20					30					30										30										30				
M	2-Φ3.4 through hole 2-Φ6.5pit depth3.3					2-Φ4.3through hole 2-Φ8pit depth4.4					2-Φ5.5through hole 2-Φ9.5pit depth 5.3					2-Φ6.9through hole 2-Φ11pit depth 6.3					2-Φ6.9through hole 2-Φ11pit depth 6.3														
N	2-M3×0.5 thread depth 5					2-M4×0.7 thread depth 6					2-M4×0.7 thread depth 6					2-M5×0.8 thread depth 7.5					2-M5×0.8 thread depth 8														
NN	Φ6					Φ8					Φ10					Φ12					Φ16														
O	5					6					8					10					13														
OO	M4×0.7×14.5L					M4×0.7×14.5L					M6×1.0×18.5L					M6×1.0×18.5L					M8×1.25×23L														
P	33.6					48					53					64					76														
PP	M4×0.7					M4×0.7					M6×1.0					M6×1.0					M8×1.25														
Q	8.5					10					7.75					8.5					9														
QQ	7					10					12.5					15					19														
R	30					38.5					45					46					56														
RR	7					10					7.75					15					19														
S	10	20	30	40	50	10	20	30	40	50	10	20	30	40	50	75	100	10	20	30	40	50	75	100	10	20	30	40	50	75	100				
SS	65	75	85	95	105	70	80	90	100	110	80	90	100	110	120	157	170	82	92	102	112	122	147	172	92	102	112	122	132	157	182				
T											9.5					13					20														
TT	5					5					6.5					9					11.5														
U	8					8					8					9					10														
UU	4-M5×0.8 thread depth4.5 same supply port on the opposite side					4-M5×0.8 thread depth4.5 same supply port on the opposite side					4-M5×0.8 thread depth 4.5 same supply port on the opposite side					4-1/8 thread depth 6.5 same supply port on the opposite side					4-1/8 thread depth 6.5 same supply port on the opposite side														
V	4-M3×0.5 thread depth 4 same on the opposite side					4-M4×0.7 thread depth5 same on the opposite side					8-M4×0.7 thread depth 6 same on the opposite side					8-M5×0.8 thread depth 7.5 same on the opposite side					8-M5×0.8 thread depth 7.5 same on the opposite side														
W	2-M4×0.7 thread depth 7					2-M5×0.8 thread depth 8					2-M6×1.0 thread depth 10					2-M8×1.25 thread depth 12					2-M8×1.25 thread depth 12														
X	M3×0.5×10L					M5×0.8×10L					M6×1.0×12L					M6×1.0×14L					M8×1.25×16L														
Y	M3×0.5×5L					M4×0.7×4L					M5×0.8×5L					M6×1.0×5L					M8×1.25×8L														
Z	30					25					30					30					40														
ZZ	82	92	102	112	122	89	99	109	119	129	104	114	124	134	144	169	194	106	116	126	136	146	171	196	122	132	142	152	162	187	212				