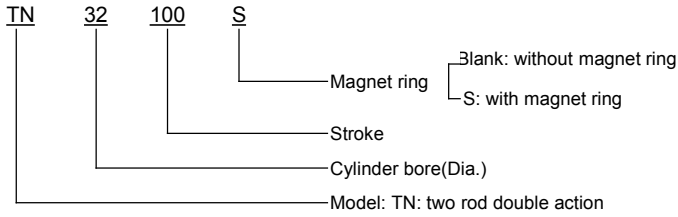
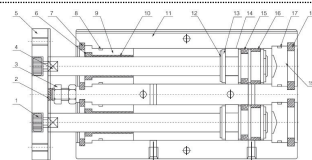
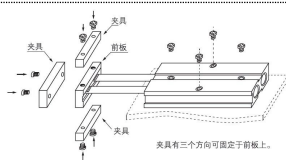
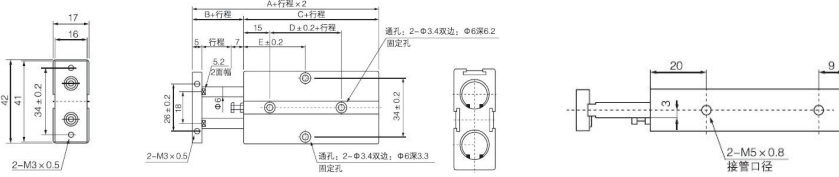


Model and Description

Specification

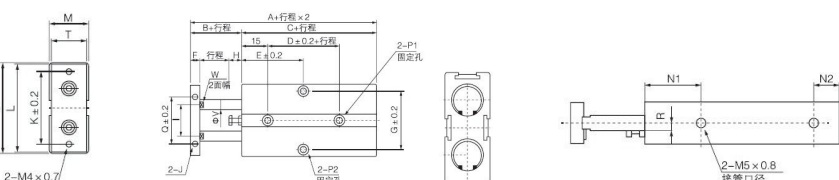
Bore Dia.(mm)	10	16	20	25	32
Working medium	Air				
Action	Double action				
Proof pressure	1.35Mpa				
Working pressure	0.1~0.9Mpa				
Working temperature	0~60°C				
Working speed	100~500mm/s				
Adjustable stroke	-10~0				
Buffer	NO	Buffer washer			
Piston rod non-rotating precision	0.4°	0.3°			
Port size Rc(PT)	M5×0.8				PT1/8
Symbol					

Fixed mode and internal structure


No.	Part name	Material	No.	Part name	Material	No.	Part name	Material
1	Inner hexagon bolt		7	Spring backstop	Spring steel	13	Piston	AL alloy
2	Buffer washer		8	Rod cover washer	NBR	14	Magnet ring	Plastic magnet
3	Adjustable screw		9	Rod cover	AL alloy	15	Piston seal packing	NBR
4	Piston rod	High-carbon steel (Hard chrome plated and polished)	10	Oil bearing	Oil bearing powder metallurgy copper	16	Wearing ring	
5	Front plate	AL alloy	11	Cylinder block	AL alloy	17	Rear cover washer	NBR
6	Rod seal packing	NBR	12	Buffer washer	PU	18	Spring backstop	Spring steel
						19	Rear cover	AL alloy

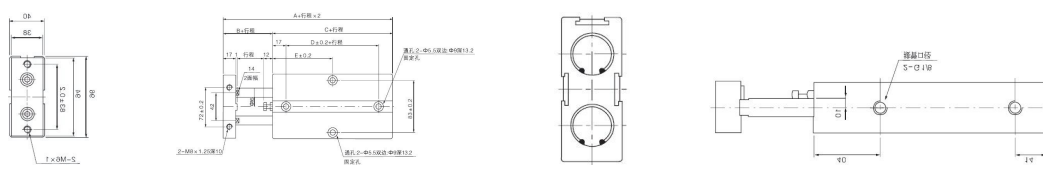
Dimensions(mm)
Φ10


Bore Dia./Stroke	A	B	C	D	E						
					10	20	30	40	50	60	70
10	58	12	46	10	30	30	35	40	45	50	55

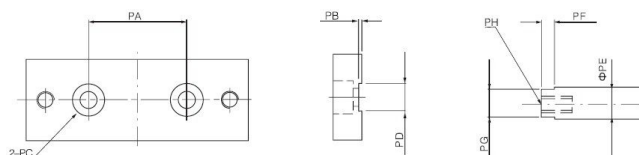
Φ16-Φ25


Bore Dia./Stroke	A	B	C	D	E										F	G	H	I	J	K	L		
					10	20	30	40	50	60	70	80	90	100								125	150
16	68	15	53	20	30	35	40	45	50	55	60	65	70	75	87.5	100	8	47	6	24	M4×0.7Depth 5	47	53
20	78	20	58	20	35	35	40	45	50	55	60	65	70	75	87.5	100	10	55	9	28	M4×0.7Depth 5	55	61
25	81	19	62	30	40	40	45	50	55	60	65	70	75	80	92.5	105	10	66	8	34	M5×0.8Depth 6	66	72

Bore Dia./Stroke	M	N1	N2	P1					P2					Q	R	S	T	V	W
				Through hole: Φ4.2					Through hole: Φ4.5										
16	20	22	10	Double sides: Φ7. Depth 7.2mm					Double sides: Φ7.5 Depth 4.4mm					34	5	54	21	8	6.2
20	24	25	12	Double sides: Φ7.5 Depth 7.2mm					Double sides: Φ8 Depth 4.4mm					44	6	62	25	10	8.2
25	29	30	12	Double sides: Φ7.5 Depth 7.2mm					Double sides: Φ8 Depth 4.4mm					56	7	73	30	12	10.2

Φ32


Bore Dia./Stroke	A	B	C	D	E											
					10	20	30	40	50	60	70	80	90	100	125	150
32	105	30	78	35	45	50	55	60	65	70	75	80	85	90	102.5	115

Φ10-Φ32


Bore Dia./Stroke	PA	PB	PC				PD	PE	PF	PG	PH	
			Through hole: Φ4.5								Depth	
10	18	0.5	Φ6.2 Depth 3.5				5.2	6	3	5.2	M3×0.5 Depth 5	
16	24	1	Φ7.8 Depth 4.6				6.2	8	3	6.2	M4×0.7 Depth 6	
20	28	1	Φ11 Depth 6.8				8.2	10	3	8.2	M6×1 Depth 8	
25	34	1	Φ11 Depth 6.8				10.2	12	3	10.2	M6×1 Depth 8	
32	42	2	Φ17 Depth 12				14	16	3	14	M10×1.5 Depth 14	