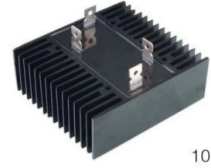
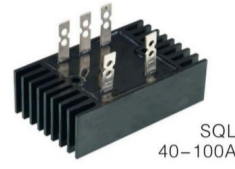


Model and Description

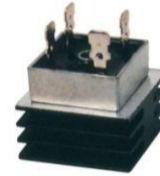
QL 35 6
 Repetitive peak reverse voltage (VRRM=Indicated value*100)
 The Value of DC output current (Id)
 Single Phase Bridge Rectifier



SQL 35 6
 Repetitive peak reverse voltage (VRRM=Indicated value*100)
 The Value of DC output current (Id)
 Three Phase Bridge Rectifier



KBPC 35 6
 Repetitive peak reverse voltage (VRRM=Indicated value*100)
 The Value of DC output current (Id)
 Single Phase Bridge Rectifier



Features

- | | |
|--|--|
| 1. Current: 5-35A | 2. Glass passivated diode chips |
| 3. Voltage: 100-1600V | 4. High thermal conductive sealing package |
| 5. Small and general purpose size | 6. Excellent power to volume ratio |
| 7. Welding technique under the protection of vacuum and hydrogen | |

Applications

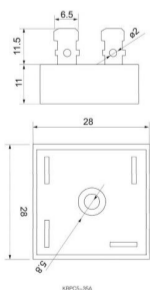
- | | |
|--|---|
| 1. Various rectifying power source | 2. Industrial automatic control systems |
| 3. Numerical control machine and remote control system | |

Specification

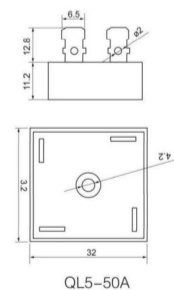
Type	ID	IF(AV)	VRRM	IRRM	VISOL	Outline
KBPC 5A-35A	5-35	2.5-17.5	100-1600	5	2500	28*28*22
QL 5A-50A	5-50	2.5-25	100-1600	5	2500	32*32*24
QL 5A-50A(Oval)	5-50	2.5-25	100-1600	5	2500	32*60*25
QL 40A	40	20	100-1600	7	2500	60*100*55
QL 60A	60	30	100-1600	7	2500	60*100*55
QL 100A	100	50	100-1600	7	2500	60*100*55
QL 150A	150	75	100-1600	10	2500	132*145*75
QL 200A	200	100	100-1600	10	2500	132*145*75
QL 250A	250	125	100-1600	10	2500	132*145*75
SQL 40A	40	14	100-1600	7	2500	60*100*55
SQL 60A	60	20	100-1600	7	2500	60*100*55
SQL 100A	100	34	100-1600	7	2500	60*100*55
SQL 150A	150	50	100-1600	10	2500	132*145*75
SQL 200A	200	67	100-1600	10	2500	132*145*75
SQL 250A	250	84	100-1600	10	2500	132*145*75

Dimensions

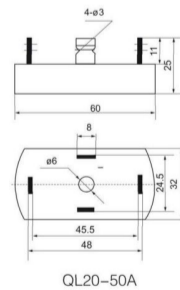
KBPC 5-35A



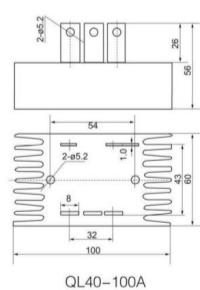
QL 5-50A



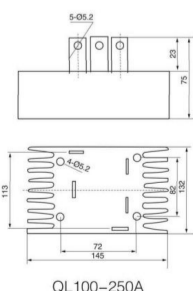
QL 20-50A



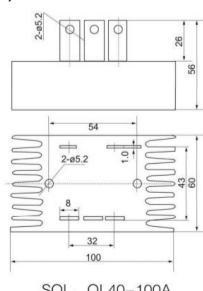
QL 40-100A



QL 100-250A



SQL, QL 40-100A



SQL, QL 100-250A

